



Article number:

4005000401GS

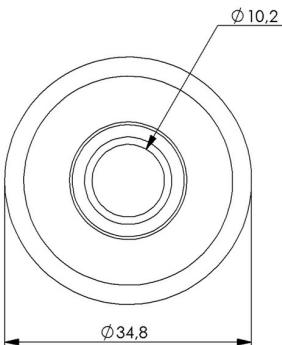
Swivel castor 50 mm, TPU-tyre

Swivel bracket. Made of zinc-chromatized pressed sheet metal with double ball race swivel. Center hole fitting. Riveted wheel axle. Wheel with grey TPU-tyre. Hub made of black PP. Plain bearing.



Image may differ from the actual product.*

DIMENSIONS



SPECIFICATIONS

Diameter	50 mm
Totalt height	64 mm
Load Capacity (dynamic)	40 kg
Castor model	Swivel
Fitting	Centre hole
Material Tread	Polyurethane
Bearing	Rivet
Thread hardness (Shore°)	98° Shore A
Centre Bolt Hole	10.2 mm
Width of tread	20 mm
Material Hub	Polypropylen (pp)
Color Tread	Grey
Material Type	RoHS (EU) - Approved
Offset	17,5 mm
Material Thickness Bracket	1,5 mm
Swivel radius	42,5 mm
Product Weight	0,09 kg
Temperature Range	-20°C to +50°C

Numeric values in the technical specification can be nominal/rounded to the cneares standard dimension. To see exact values, please use the drawing.