



Article number:

4105006601GS

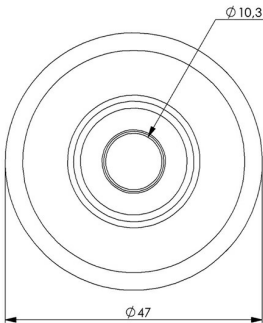
Braked castor twin wheel 50 mm, wheel brake, TPE-tyre

Swivel bracket for twin wheel with wheel brake. Made of zinc-chromatized pressed sheet metal with double ball race swivel. Center hole fitting. Riveted wheel axle. Wheel with grey TPE-tyre. Hub made of black PP. Plain bearing.



Image may differ from the actual product.*

DIMENSIONS



SPECIFICATIONS

Diameter	50 mm
Totalt height	70 mm
Load Capacity (dynamic)	70 kg
Castor model	Brake
Fitting	Centre hole
Material Tread	TPE
Bearing	Rivet
Thread hardness (Shore°)	85° Shore A
Centre Bolt Hole	102 mm
Brake	Wheel brake
Width of tread	20 mm
Material Hub	Polypropylen (pp)
Color Tread	Grey
Offset	24,5 mm
Material Thickness Bracket	2 mm
Swivel radius	65,5 mm

Numeric values in the technical specification can be nominal/rounded to the cneares standard dimension. To see exact values, please use the drawing.