

# PRODUCT DATA SHEET

2024-02-07



Article number:

4312000411SSS

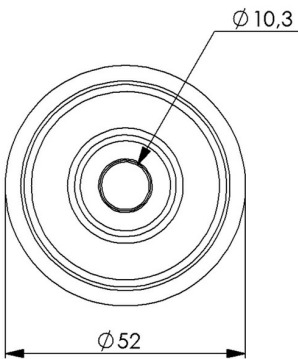
Swivel castor 125 mm, TPU-tyre

Swivel bracket. Made of zinc-chromatized pressed sheet metal with double ball race swivel. Center hole fitting. Black lacquered. Riveted wheel axle. Wheel with black TPU-tyre. Hub made of black PP with threadguards. Plain bearing.



Image may differ from the actual product.\*

## DIMENSIONS



## SPECIFICATIONS

Diameter	125 mm
Totalt height	150 mm
Load Capacity (dynamic)	70 kg
Castor model	Swivel
Fitting	Centre hole
Material Tread	Polyurethane
Bearing	Plain bearing
Thread hardness (Shore°)	98° Shore A
Centre Bolt Hole	102 mm
Width of tread	28 mm
Material Hub	Nylon PA6
Wheel Pattern	EN 12530
Painted Housing	Black
Color Tread	Black
Material Type	RoHS (EU) - Approved
Teststandard	EN 12530
Offset	41 mm
Material Thickness Bracket	2,5 mm
Swivel radius	103,5 mm
Product Weight	0,52 kg
Temperature Range	-20°C to +50°C

Numeric values in the technical specification can be nominal/rounded to the cneares standard dimension. To see exact values, please use the drawing.