

PRODUCT DATA SHEET

2024-02-12



Article number:

5820680933GG 

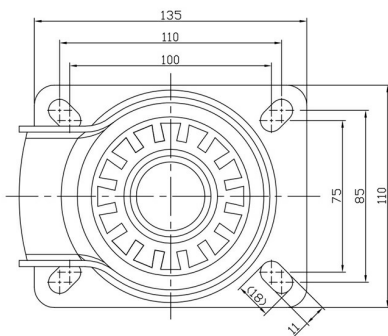
Swivel castor 200 mm, elastic rubber-tyre

Swivel bracket. Made of zinc-chromatized pressed sheet metal with double ball race swivel. Top plate fitting. Wheel axle with nut. Wheel with grey elastic rubber-tyre. Hub made of grey Nylon/PA6 with theardguards. Ball bearing.



Image may differ from the actual product.*

DIMENSIONS



SPECIFICATIONS

| | |
|----------------------------|----------------------|
| Diameter | 200 mm |
| Totalt height | 235 mm |
| Load Capacity (dynamic) | 350 kg |
| Castor model | Swivel |
| Fitting | Top plate |
| Material Tread | Elastic Rubber |
| Bearing | Double Ball bearing |
| Plate Size | 140x110 mm |
| CC Distance | 105x80 mm |
| Thread hardness (Shore°) | 75° Shore A |
| Width of tread | 45 mm |
| Material Hub | Nylon PA6 |
| Top Hole | 11x14 mm |
| Color Tread | Grey |
| Material Type | RoHS (EU) - Approved |
| Offset | 53 mm |
| Material Thickness Bracket | 3 mm |
| Materialthickplate | 3,5 mm |
| Product Weight | 2,43 kg |
| Temperature Range | -20°C to +50°C |

Numeric values in the technical specification can be nominal/rounded to the nearest standard dimension. To see exact values, please use the drawing.