

PRODUCT DATA SHEET

2024-02-12



Article number:

5620680933GG 

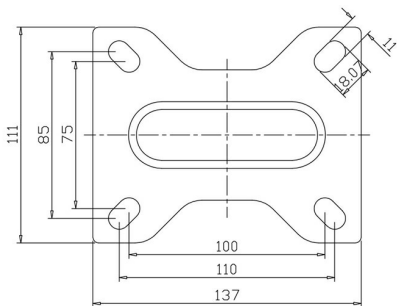
Fixed castor 200 mm, elastic rubber-tyre

Fixed bracket made of zinc-chromatized pressed sheet metal. Top plate fitting. Wheel axle with nut. Wheel axle with nut. Wheel with grey elastic rubber-tyre. Hub made of grey Nylon/PA6 with threadguards. Double Ball bearing.



Image may differ from the actual product.*

DIMENSIONS



SPECIFICATIONS

Diameter	200 mm
Totalt height	236 mm
Load Capacity (dynamic)	350 kg
Castor model	Fix
Fitting	Top plate
Material Tread	Elastic Rubber
Bearing	Double Ball bearing
Plate Size	140x110 mm
CC Distance	105x80 mm
Thread hardness (Shore°)	75° Shore A
Width of tread	45 mm
Hub Hole Diameter	12 mm
Material Hub	Nylon PA6
Top Hole	11x14 mm
Fork Width	61 mm
Fixed	Yes
Color Tread	Grey
Material Type	RoHS (EU) - Approved
Material Thickness Bracket	3 mm
Materialthickplate	3 mm
Product Weight	2,05 kg
Temperature Range	-20°C to +50°C

Numeric values in the technical specification can be nominal/rounded to the cheares standard dimension. To see exact values, please use the drawing.