

PRODUCT DATA SHEET

2024-02-12



Article number:

5612660933GS

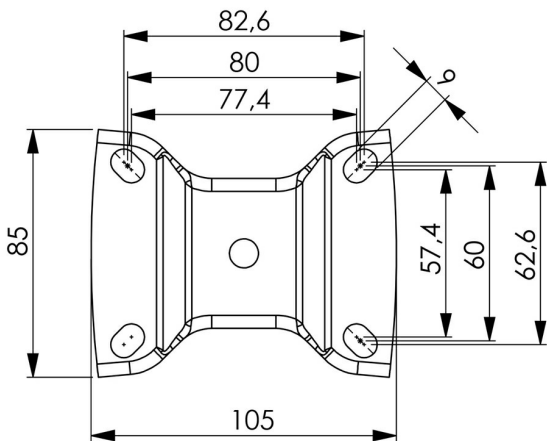
Fixed castor 125 mm, elastic rubber-tyre

Fixed bracket made of zinc-chromatized pressed sheet metal. Top plate fitting. Wheel axle with nut. Wheel with grey elastic rubber-tyre. Hub made of black Nylon/PA6 with threadguards. Ball bearing.



Image may differ from the actual product.*

DIMENSIONS



SPECIFICATIONS

| | |
|----------------------------|----------------------|
| Diameter | 125 mm |
| Totalt height | 157 mm |
| Load Capacity (dynamic) | 225 kg |
| Castor model | Fix |
| Fitting | Top plate |
| Material Tread | Elastic Rubber |
| Bearing | Ball bearing |
| Plate Size | 105x85 mm |
| CC Distance | 80x60 mm |
| Thread hardness (Shore°) | 75° Shore A |
| Width of tread | 36 mm |
| Hub Hole Diameter | 10 mm |
| Material Hub | Nylon PA6 |
| Top Hole | 12,5x9 mm |
| Fork Width | 48 mm |
| Fixed | Yes |
| Color Tread | Grey |
| Material Type | RoHS (EU) - Approved |
| Teststandard | EN 12532 |
| Material Thickness Bracket | 2 mm |
| Materialthicknessplate | 2 mm |
| Product Weight | 0,92 kg |
| Temperature Range | -30°C to +70°C |

Numeric values in the technical specification can be nominal/rounded to the nearest standard dimension. To see exact values, please use the drawing.