

# PRODUCT DATA SHEET

2024-01-29



Article number:

5A12660322SS

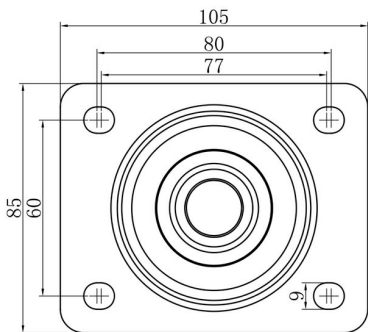
Swivel castor 125 mm, rubber-tyre

Swivel bracket. Made of zinc-chromatized pressed sheet metal with double ball race swivel. Top plate fitting. Wheel axle with nut. Wheel with black rubber-tyre. Hub made of black PP. Roller bearing.



Image may differ from the actual product.\*

## DIMENSIONS



## SPECIFICATIONS

Diameter	125 mm
Totalt height	155 mm
Load Capacity (dynamic)	100 kg
Castor model	Swivel
Fitting	Top plate
Material Tread	Rubber
Bearing	Roller bearing
Plate Size	105x85 mm
CC Distance	80x60 mm
Thread hardness (Shore°)	85° Shore A
Width of tread	38 mm
Material Hub	Polypropylen (pp)
Top Hole	9 mm
Dyn. Load Capacity (4km/)	100 kg
Color Tread	Black
Material Type	RoHS (EU) - Approved
Offset	41 mm
Material Thickness Bracket	2.5 mm
Materialthicknessplate	3 mm
Product Weight	1.1 kg
Temperature Range	-20°C to +60°C

Numeric values in the technical specification can be nominal/rounded to the nearest standard dimension. To see exact values, please use the drawing.