

PRODUCT DATA SHEET

2024-02-12



Article number:

5508660432BV-HD

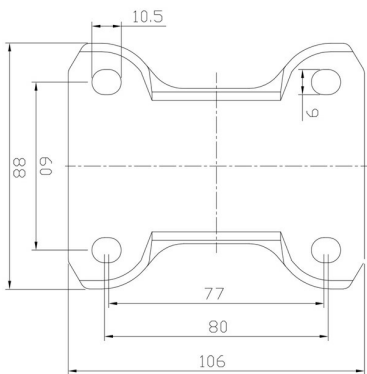
Fixed castor 80 mm, TPU-tyre

Fixed bracket made of zinc-chromatized pressed sheet metal. Top plate fitting. Wheel axle with nut. Wheel with red TPU-tyre. Hub made of Nylon/PA6. Double Ball bearing.



Image may differ from the actual product.*

DIMENSIONS



SPECIFICATIONS

Diameter	80 mm
Totalt height	111 mm
Load Capacity (dynamic)	260 kg
Castor model	Fix
Fitting	Top plate
Material Tread	Polyurethane
Bearing	Double Ball bearing
Plate Size	105x85 mm
CC Distance	80x60 mm
Thread hardness (Shore°)	98° Shore A
Width of tread	34 mm
Material Hub	Nylon PA6
Top Hole	10x9 mm
Fixed	Yes
Dyn. Load Capacity (4km/)	260 kg
Color Tread	Red
Material Type	RoHS (EU) - Approved
Material Thickness Bracket	3 mm
Materialthicknessplate	3 mm
Product Weight	0.99 kg
Temperature Range	-20°C to +70°C

Numeric values in the technical specification can be nominal/rounded to the nearest standard dimension. To see exact values, please use the drawing.