

# PRODUCT DATA SHEET

2024-02-12



Article number:

5208665432BV-HD

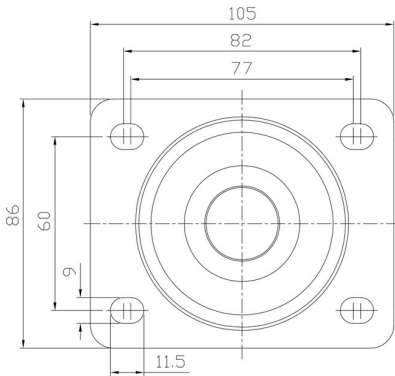
Braked castor 80 mm, total stop brake, TPU-tyre

Swivel bracket with total stop brake. Made of zinc-chromatized pressed sheet metal with double ball race swivel. Top plate fitting. Wheel axle with nut. Wheel with red TPU-tyre. Hub made of Nylon/PA6. Double Ball bearing.



Image may differ from the actual product.\*

## DIMENSIONS



## SPECIFICATIONS

Diameter	80 mm
Totalt height	111 mm
Load Capacity (dynamic)	260 kg
Castor model	Brake
Fitting	Top plate
Material Tread	Polyurethane
Bearing	Double Ball bearing
Plate Size	105x85 mm
CC Distance	80x60 mm
Thread hardness (Shore°)	98° Shore A
Brake	Total brake
Width of tread	34 mm
Material Hub	Nylon PA6
Top Hole	9 mm
Dyn. Load Capacity (4km/)	260 kg
Color Tread	Red
Material Type	RoHS (EU) - Approved
Offset	40 mm
Material Thickness Bracket	3,5 mm
Materialthickplate	4 mm
Product Weight	1,5 kg
Temperature Range	-20°C to +70°C

Numeric values in the technical specification can be nominal/rounded to the cheares standard dimension. To see exact values, please use the drawing.