

PRODUCT DATA SHEET

2024-02-08



Article number:

420700C311GS 

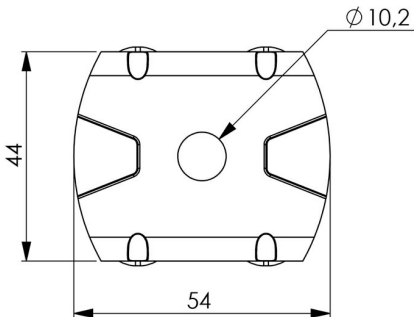
Fixed castor 75 mm, TPE-tyre

Fixed bracket made of zinc-chromatized pressed sheet metal. Center hole fitting. Riveted wheel axle. Wheel with grey TPE-tyre. Hub made of black PP. Plain bearing.



Image may differ from the actual product.*

DIMENSIONS



SPECIFICATIONS

Diameter	75 mm
Totalt height	98 mm
Load Capacity (dynamic)	55 kg
Castor model	Fix
Fitting	Centre hole
Material Tread	TPE
Bearing	Plain bearing
Plate Size	44x54 mm
Thread hardness (Shore°)	85° Shore A
Centre Bolt Hole	10.2 mm
Width of tread	24 mm
Material Hub	Polypropylen (pp)
Fixed	Yes
Color Tread	Grey
Material Type	RoHS (EU) - Approved
Material Thickness Bracket	3 mm
Temperature Range	-20°C to +50°C

Numeric values in the technical specification can be nominal/rounded to the cneares standard dimension. To see exact values, please use the drawing.