

Article number:

5F156804320Z-ALU

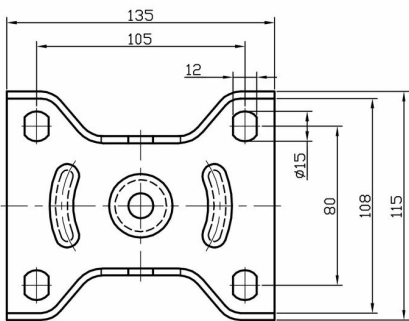
Fixed castor 150 mm, PU-tyre

Fixed bracket made of zinc-chromatized pressed sheet metal. Top plate fitting. Wheel axle with nut. Wheel with orange PU-tyre. Hub made of aluminium. Double Ball bearing.



Image may differ from the actual product.*

DIMENSIONS



SPECIFICATIONS

Diameter	150 mm
Totalt height	194 mm
Load Capacity (dynamic)	550 kg
Castor model	Fix
Fitting	Top plate
Material Tread	Polyurethane
Bearing	Double Ball bearing
Plate Size	140x110 mm
CC Distance	105x80 mm
Thread hardness (Shore°)	93° Shore A
Width of tread	50 mm
Material Hub	Aluminium
Top Hole	13 mm
Fixed	Yes
Dyn. Load Capacity (4km/)	550 kg
Color Tread	Orange
Material Type	RoHS (EU) - Approved
Material Thickness Bracket	3,5 mm
Materialthicknessplate	3,5 mm
Product Weight	2,4 kg
Temperature Range	-20°C to +70°C

Numeric values in the technical specification may be nominal/rounded to the nearest standard dimension. To see exact values, please refer to the drawing.