

PRODUCT DATA SHEET

2025-09-22



Article number:

5E156854320Z-ALU

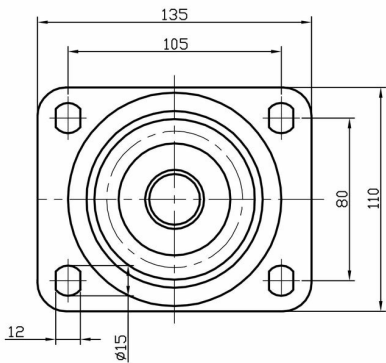
Braked castor 150 mm, total stop brake, PU-tyre

Swivel bracket with total stop brake. Made of zinc-chromatized pressed sheet metal with double ball race swivel. Top plate fitting. Wheel axle with nut. Wheel with orange PU-tyre. Hub made of aluminum. Double Ball bearing.



Image may differ from the actual product.*

DIMENSIONS



SPECIFICATIONS

| | |
|----------------------------|----------------------|
| Diameter | 150 mm |
| Totalt height | 194 mm |
| Load Capacity (dynamic) | 550 kg |
| Castor model | Brake |
| Fitting | Top plate |
| Material Tread | Polyurethane |
| Bearing | Double Ball bearing |
| Plate Size | 140x110 mm |
| CC Distance | 105x80 mm |
| Thread hardness (Shore°) | 93° Shore A |
| Brake | Total brake |
| Width of tread | 50 mm |
| Material Hub | Aluminium |
| Top Hole | 13 mm |
| Dyn. Load Capacity (4km/) | 550 kg |
| Color Tread | Orange |
| Material Type | RoHS (EU) - Approved |
| Offset | 55 mm |
| Material Thickness Bracket | 4 mm |
| Materialthickplate | 6 mm |
| Product Weight | 3,52 kg |
| Temperature Range | -20°C to +70°C |

Numeric values in the technical specification may be nominal/rounded to the nearest standard dimension. To see exact values, please refer to the drawing.