

PRODUCT DATA SHEET

2024-02-02



Article number:

4005620401SSS

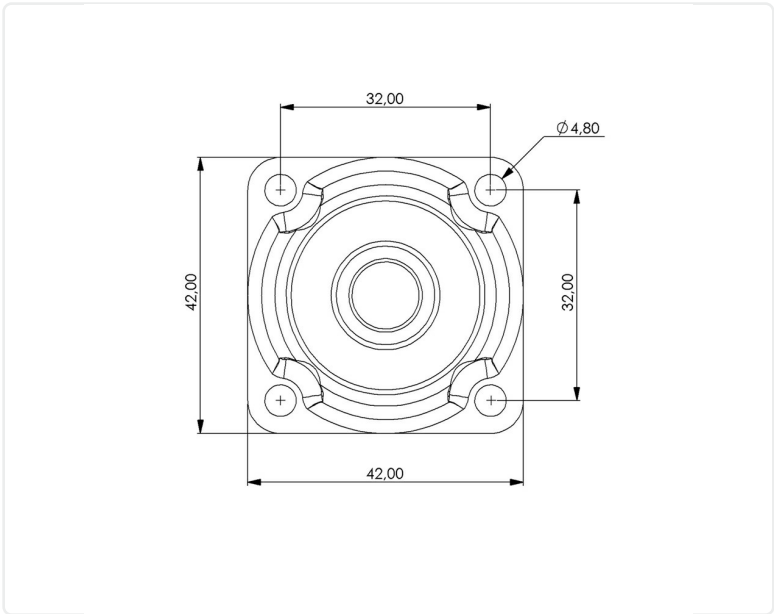
Swivel castor 50 mm, TPU-tyre

Swivel bracket. Made of zinc-chromatized pressed sheet metal with double ball race swivel. Center hole fitting. Black laquered. Riveted wheel axle. Wheel with grey TPU-tyre. Hub made of black PP. Plain bearing.



Image may differ from the actual product.*

DIMENSIONS



SPECIFICATIONS

Diameter	50 mm
Totalt height	64 mm
Load Capacity (dynamic)	40 kg
Castor model	Swivel
Fitting	Top plate
Material Tread	Polyurethane
Bearing	Rivet
Plate Size	42x42 mm
CC Distance	32x32 mm
Thread hardness (Shore°)	98° Shore A
Width of tread	20 mm
Material Hub	Polypropylen (pp)
Top Hole	48 mm
Wheel Pattern	EN 12530
Painted Housing	Black
Color Tread	Black
Material Type	RoHS (EU) - Approved
Teststandard	EN 12530
Offset	17.5 mm
Material Thickness Bracket	1.5 mm
Materialthicknessplate	1.5 mm
Swivel radius	42.5 mm
Product Weight	0.11 kg
Temperature Range	-20°C to +50°C

Numeric values in the technical specification can be nominal/rounded to the nearest standard dimension. To see exact values, please use the drawing.