

Article number:

4312000331GG-P

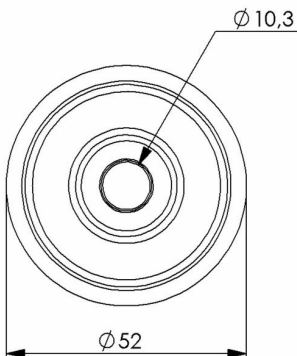
Swivel castor 125 mm, TPE-tyre

Swivel bracket. Made of zinc-chromatized pressed sheet metal with double ball race swivel. Center hole fitting. Riveted wheel axle. Riveted wheel axle. Wheel with grey TPE-tyre. Hub made of grey PP with threadguards. Ball bearing.



Image may differ from the actual product.*

DIMENSIONS



SPECIFICATIONS

Diameter	125 mm
Totalt height	150 mm
Load Capacity (dynamic)	70 kg
Castor model	Swivel
Fitting	Center hole
Material Tread	TPE
Bearing	Ball bearing
Thread hardness (Shore°)	85° Shore A
Centre Bolt Hole	102 mm
Width of tread	32 mm
Material Hub	Polypropylen (pp)
Color Tread	Grey
Teststandard	EN 12530
Offset	41 mm
Material Thickness Bracket	2.5 mm
Swivel radius	103.5 mm
Product Weight	0.53 kg
Temperature Range	-20°C to +50°C

Numeric values in the technical specification may be nominal/rounded to the nearest standard dimension. To see exact values, please refer to the drawing.