

Article number:

4312008331GG

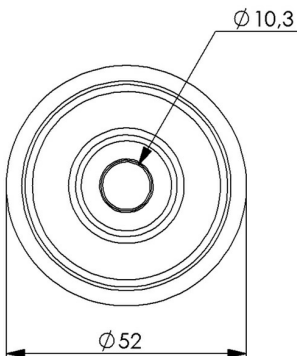
Braked castor 125 mm, total stop brake, TPE-tyre

Swivel bracket with total stop brake. Made of zinc-chromatized pressed sheet metal with double ball race swivel. Center hole fitting. Zinc brake. Riveted wheel axle. Wheel with grey TPE-tyre. Hub made of grey PP with threadguards. Ball bearing.



Image may differ from the actual product.*

DIMENSIONS



SPECIFICATIONS

Diameter	125 mm
Totalt height	150 mm
Load Capacity (dynamic)	70 kg
Fitting	Center hole
Material Tread	TPE
Thread hardness (Shore°)	85° Shore A
Centre Bolt Hole	10,2 mm
Brake	Total brake
Width of tread	32 mm
Material Hub	Polypropylen (pp)
Color Tread	Grey
Offset	41 mm
Swivel radius	115 mm
Temperature Range	-20°C to +50°C

Numeric values in the technical specification can be nominal/rounded to the cneares standard dimension. To see exact values, please use the drawing.